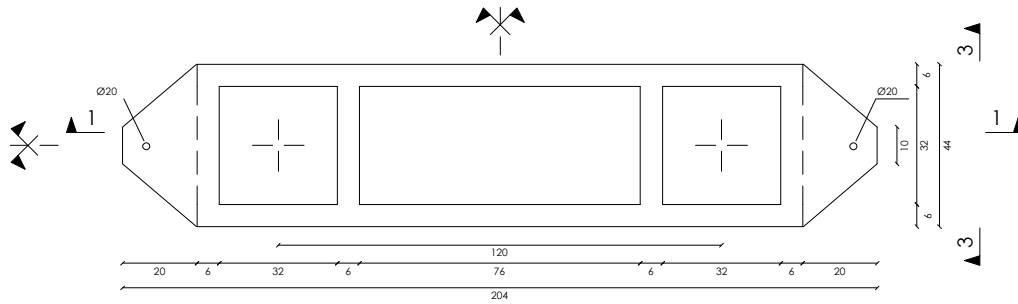
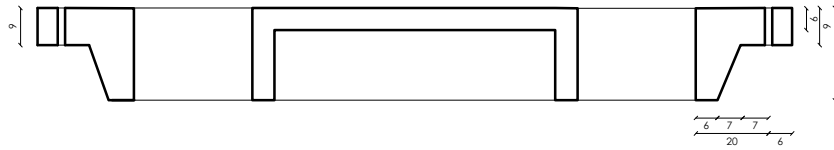


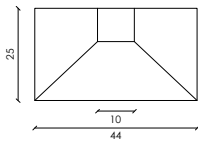
PLANTA ENCOFRADO



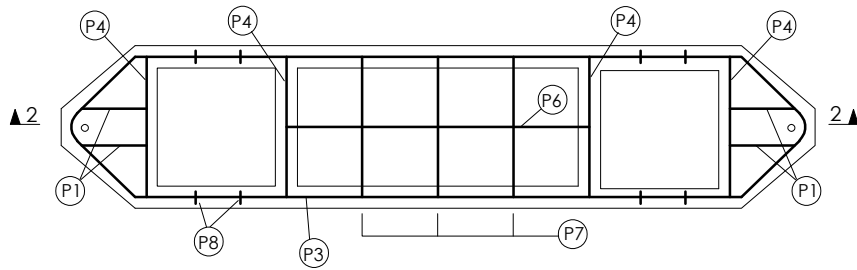
CORTE 1-1



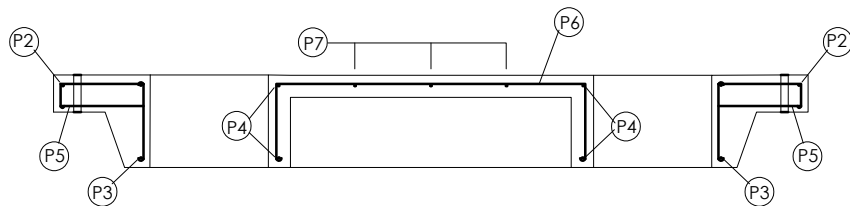
VISTA 3-3

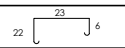
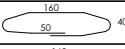
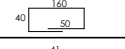
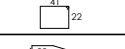
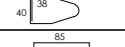
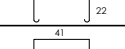
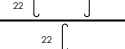
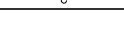


PLANTA ARMADURA



CORTE 2-2



Pos	Armadura	Despiezo
(P1)	4Ø10	22  6
(P2)	1Ø12	 40
(P3)	1Ø12	 40
(P4)	4Ø8	 22
(P5)	2Ø10	 40
(P6)	1Ø6	 22
(P7)	3Ø6	 22
(P8)	8Ø6	 22

NOTA:

Hormigon tipo C25 (UNIT1050)

Acero tratado tension de fluencia $\geq 4200\text{Kg/cm}^2$

El hueco para las columnas podra adaptarse a la forma de las mismas.

08/04

1) CAMBIO EN EL TEMA DE EL ROTULO, SE AGREGO 60KV



MENSULA PARA HILO DE GUARDIA EN TERMINAL Y ANGULO

LINEAS AEREAS DE 30KV Y 60KV 144 A 1:10

052604/00	05/08	MARCELO PEREZ	VALENTINA CAL	INES ALMARAZ
AA-DIBUJO/D-LINEAS/30/MANUAL COLUMNA/MAYO.03/PLANOS/PT-144A-052604/00				